

**INSULATED BACKFLOW ENCLOSURE:**

**PLACER WATERWORKS**

- 3/4" to 1" BACKFLOW: MODEL PW/E1A-W(S)
- 1 1/2" to 2" BACKFLOW: MODEL PW/E1A-W(M)

**CONCRETE PAD SIZE:**

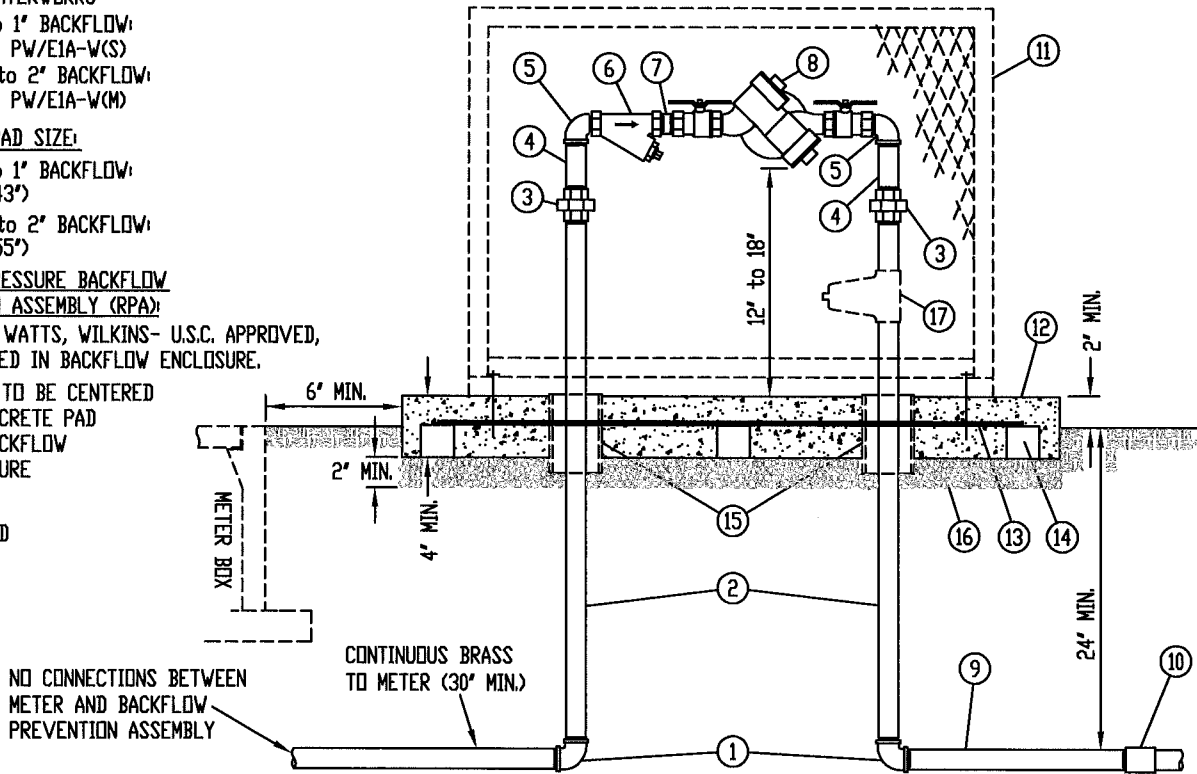
- 3/4" to 1" BACKFLOW: (29"x43")
- 1 1/2" to 2" BACKFLOW: (29"x55")

**REDUCED PRESSURE BACKFLOW PREVENTION ASSEMBLY (RPA):**

- FEBCO, WATTS, WILKINS- U.S.C. APPROVED, CENTERED IN BACKFLOW ENCLOSURE.
- PIPING TO BE CENTERED ON CONCRETE PAD AND BACKFLOW ENCLOSURE

**PADLOCK:**

- BY CHWD



**NOTES:**

- REDUCED PRESSURE BACKFLOW PREVENTION ASSEMBLY SHALL BE PLUMB.
- CONTACT CITRUS HEIGHTS WATER DISTRICT FOR REBAR INSPECTION PRIOR TO POURING CONCRETE. (916) 725-6873
- MATERIAL BELOW AGGREGATE BASE SHALL BE COMPACTED TO 90% MINIMUM.
- REINFORCED CONCRETE PAD SHALL BE FINISHED WITH AN EDGING TOOL AROUND THE ENTIRE PERIMETER AND BROOMED AT RIGHT ANGLES TO THE DIRECTION OF TRAFFIC.
- RPA SHALL BE TESTED BY A CHWD CERTIFIED BACKFLOW PREVENTION ASSEMBLY TESTER PRIOR TO DISTRICT ACCEPTANCE OF FACILITIES.
- COLOR OF ENCLOSURE TO BE DETERMINED BY DISTRICT INSPECTOR.

1	BRASS ELBOW	11	INSULATED BACKFLOW ENCLOSURE - SECURED TO PAD w/ 1/2" x 4" SLEEVE ANCHORS (RED HEAD OR EQUAL) - SEE ABOVE NOTE
2	BRASS NIPPLE - CONTINUOUS	12	REINFORCED CONCRETE PAD - TYPE II SIX-SACK PORTLAND CEMENT - SEE ABOVE NOTE FOR SIZE
3	BRASS UNION	13	CONCRETE DOBIE w/WIRE
4	3" OR 4" BRASS NIPPLE	14	3/8" (#3) REBAR - 2" INSIDE PERIMETER
5	BRASS STREET ELBOW	15	3" PVC SLEEVES - SAND FILLED
6	WYE STRAINER - BRONZE W/ PLUG	16	3/4" CLASS 2 AGGREGATE BASE - 2" MINIMUM, MECHANICALLY COMPACTED TO 90%
7	CLOSE BRASS NIPPLE	17	PRESSURE REGULATOR - AS DETERMINED BY THE APPROPRIATE GOVERNING AUTHORITY
8	REDUCED PRESSURE BACKFLOW PREVENTION ASSEMBLY w/ BALL VALVES and TEST COCKS w/ BRASS PLUGS (4) - SEE ABOVE NOTE FOR FURTHER INFORMATION		
9	24" BRASS NIPPLE		
10	PVC COUPLING - SCH 80, THREADED		



**CITRUS  
HEIGHTS  
WATER  
DISTRICT**

**3/4" TO 2" REDUCED PRESSURE BACKFLOW PREVENTION ASSEMBLY w/ BACKFLOW ENCLOSURE**

**CITRUS HEIGHTS WATER DISTRICT**

APPROVED BY: Robert A. Chumbeo DATE: 5/8/13  
CITRUS HEIGHTS WATER DISTRICT

DRAWN: 8 MAY 2013

REVISED:

SCALE: N.T.S.

DESIGN: P.A.D.

CAD FILE: RP\_312.DWG

PAGE:

**RP\_312**